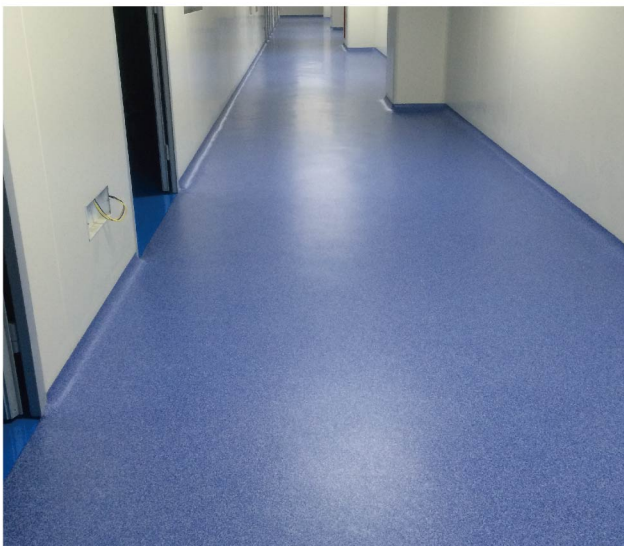
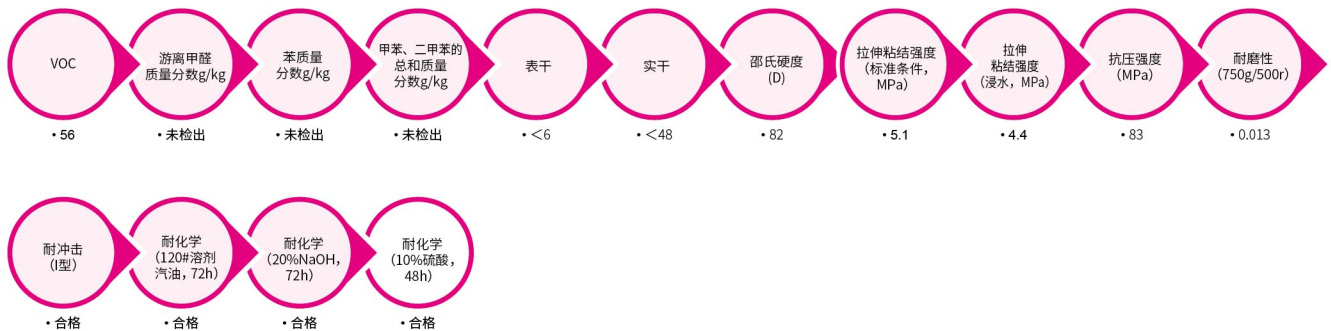
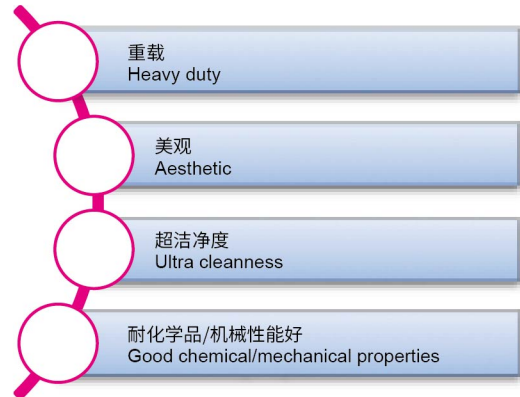


COEPOX 401 (4~6mm)

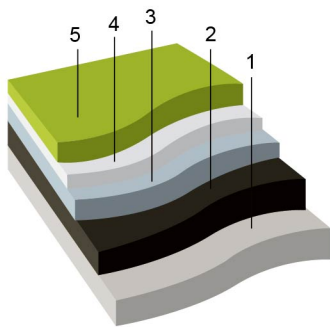
环氧彩砂系统 COLORED QUARTZ EPOXY MORTAR SCREED

COEPOX 401(4~6mm) 是环氧彩砂系统,是工业/商业项目地面(包括磨损地面)的理想选择,耐化学品性/物理性能佳,表面平整美观。可以创造出无缝的,防水的,平整光洁或带止滑纹理的,彩色的,密实的,抗油污的,耐化学品的,耐磨损耐冲击的地面。

COEPOX 401(4~6mm) is a color quartz epoxy mortar screed system that is ideal to coat industrial/commercial floors (including worn floors) that require high chemical/physical resistance, remarkable flatness and a pleasant appearance. Just 4~6mm thick and requiring only a few days work, this system allows to create an uninterrupted, waterproof, smooth or textured, coloured, compact, non-absorbent, anti-dust/anti-oil flooring that is resistant to chemical aggression, wear and compression.



步骤 Step	产品 Product	说明 Information	理论用量 Consumption	施工方法 Application method	覆涂间隔时间 Overcoating
1	基面 Base	处理 Preparation	机械处理, 清洁 Mechanical treatment and cleaning of base		
2	底涂 Primer	COEPOX 111/120 无溶剂环氧底涂 Solvent-free epoxy resin primer	0.4 kg/m ²	滚涂 Roller	16小时后 Allow 16 hours
3	砂浆 Mortar	COEPOX 401+ 级配彩砂 Colored QUARTZ 在刚施工好的底涂上施工 Apply on freshly-applied primer	8.0-12.0 kg/m ²	镬涂 Trowel	16小时后 Allow 16 hours
4	灌封 Pore sealer	COEPOX 401 无溶剂环氧树脂清漆 Solvent-free epoxy resin varnish	1.0-1.6 kg/m ²	镬涂 Trowel	16小时后 Allow 16 hours
5	罩面 Topcoat	COEPUR W700/ S705 聚氨酯罩面 Polyurethane topcoat	0.12 kg/m ²	滚涂 Roller	



适用场所

- 酿酒工业
- 食品及食品加工行业
- 超市
- 医院
- 制药工业
- 屠宰业, 鱼肉加工业
- 化学工业
- 行车频繁区域如汽修厂及汽车库
- 食堂
- 轻工业
- 展会、交易会
- 贮藏库

Uses

- Wine industry
- Food and food processing industry
- Supermarkets
- Hospitals
- Pharmaceutical industry
- Slaughtering industry and meat and fish processing industry
- Chemical industries
- Garages and vehicle depots subject to medium-to-heavy traffic
- Canteen kitchens
- Light engineering industry
- Exhibition and trade fair halls
- Storage depots